

Поставляется Компанией  
«Новые Технологии»



**8810**



**SOURIAU**  
Connection Technology



_____	_____
.	4
	8
	9
	10
.	14
	17
	19

# 8810



300

8810

3000

8810

150

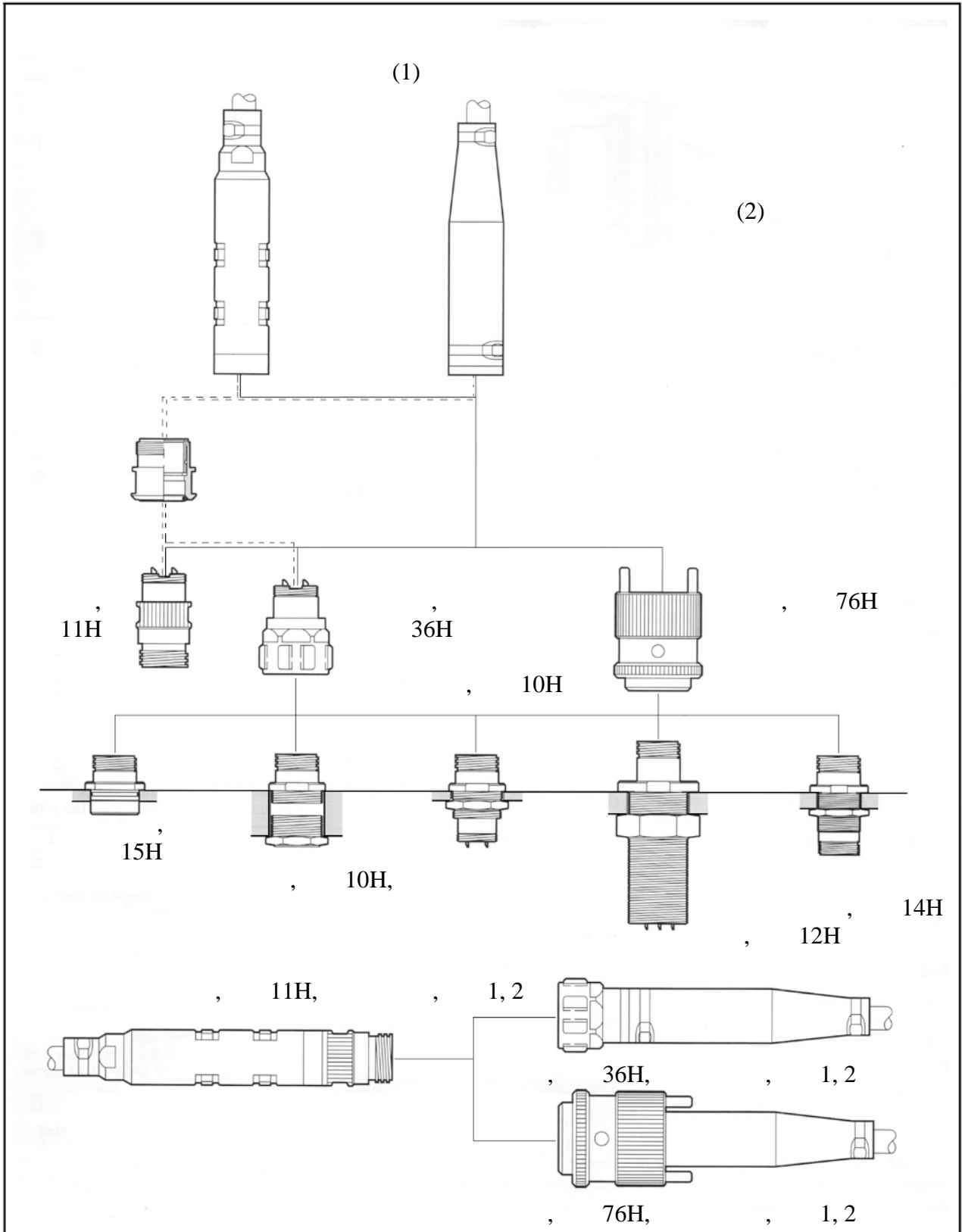
• : • : -30°C + 70°C  
 ( ) : -3°C + 40°C  
 - 1, 2, 3, 4, 7 (3 ) 75 - 11  
 : 300 (25 ) - 0.1 1  
 : 300 1 5 (0.1 )  
 - 5, 6 5 22 (1  
 : 150 22 50 (2 )  
 : 500 ( )  
 \* :  
 : MIL-S 901C (NAVY) HI  
 : n° HT  
 : 0458-TP-1  
 : «A»  
 316L :  
 : 316L,  
 : «I»

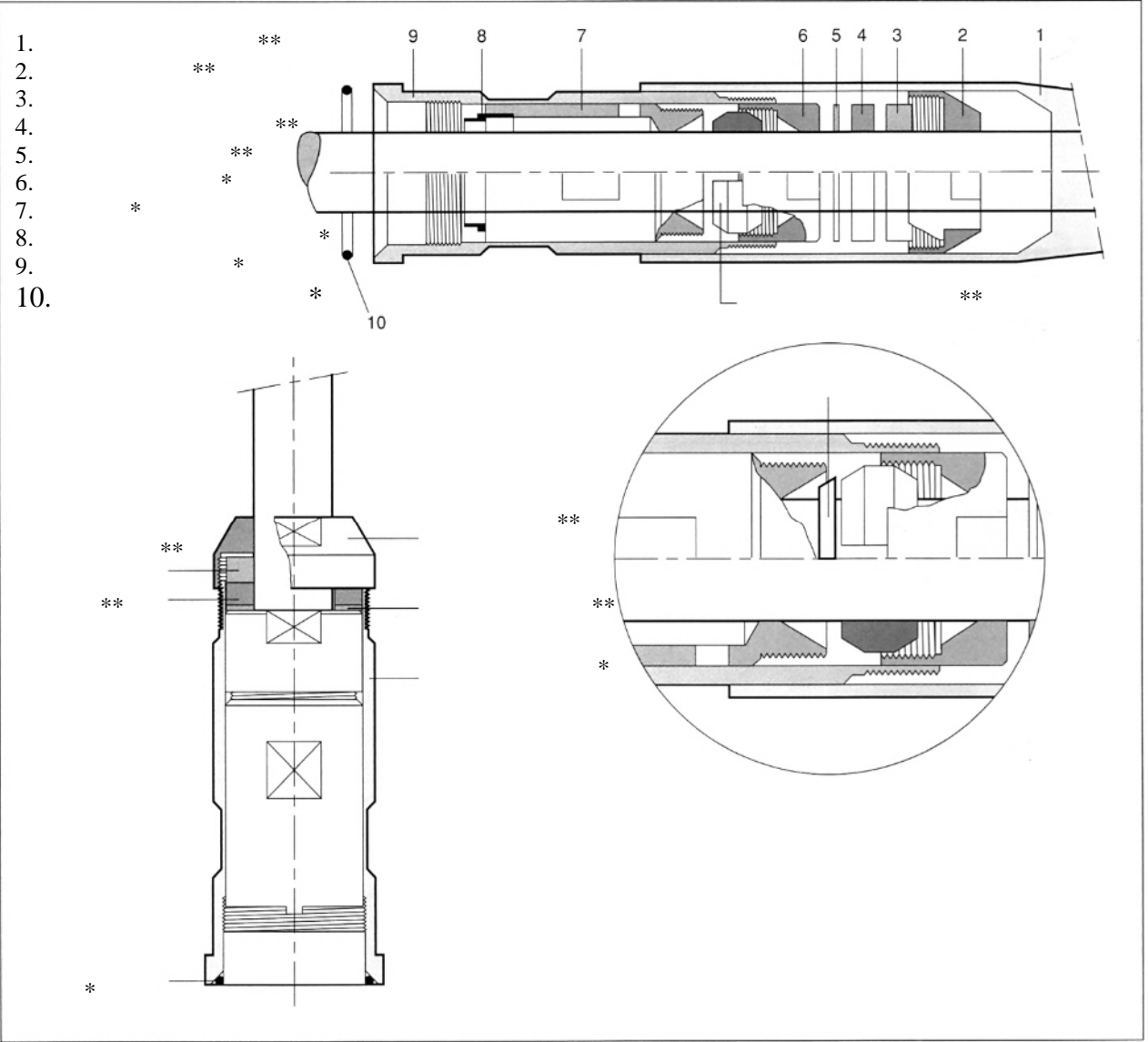
	(A)	(A)
4 - # 20	7.5	7.5
7 - # 20	7.5	6.5
12 - # 20	7.5	5.5
19 - # 20	7.5	4.5
38 - # 20	7.5	3.5
4 - # 16	15	14
12 - # 16	15	12
37 - # 16	15	6.5
66 - # 16	15	5
1 - Ø 7	100	100
4 - # 8	45	35
1 - Ø 18	400	400
4 - Ø 10+2 - # 8	150 + 45	150 + 45

US Navy (NCSC)

			( . )	( . )	( . )
1	4	# 20	2500	500	220
2	7	# 20	2500	500	220
	4	# 16	2500	500	220
	1	Ø 7	3750	750	750
3	12	# 20	2500	500	220
4	19	# 20	2500	500	220
	12	# 16	2500	500	220
	4	# 8	3750	750	360
5	37	# 16	2500	500	220
	1	Ø 18	7500	1500	1500
6	68	# 16	2500	500	220
	4	Ø 10	3750	750	360
7	38	# 20	2500	500	220

\* 5 ( )

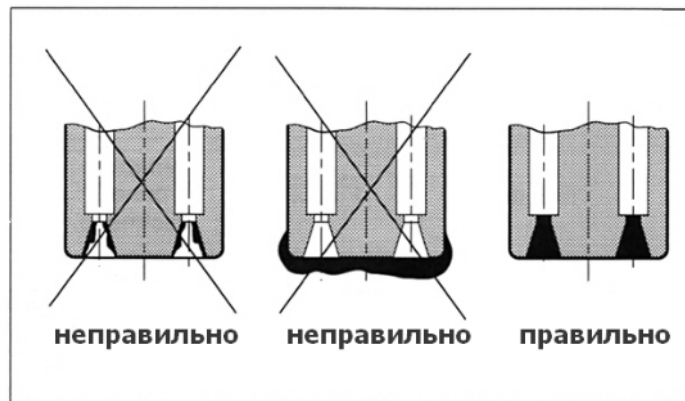
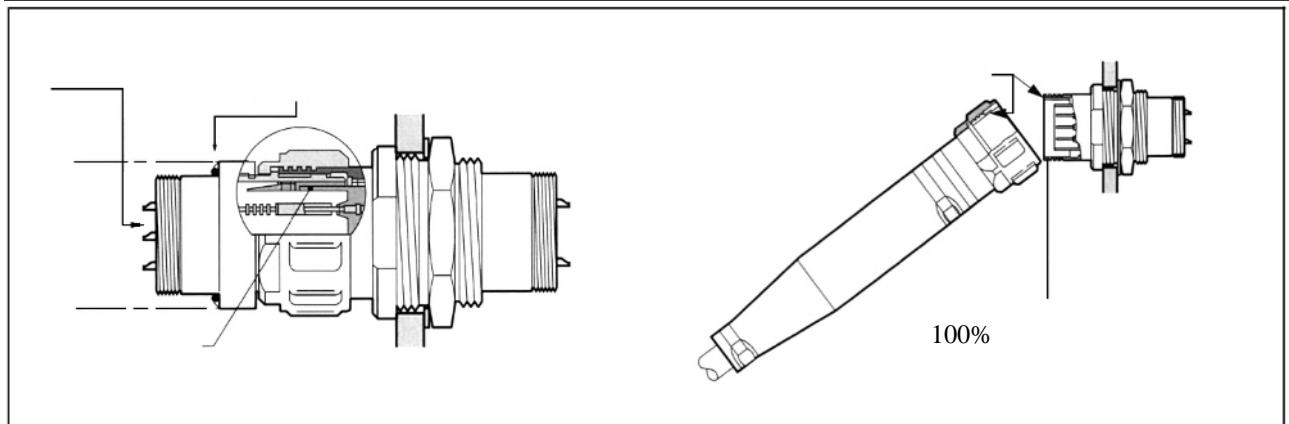




\*  
\*\*

2 4

	1	2	8810-44
	2	3	8810-45
	3	4	8810-46
	1	3	8810-47
	2	4	8810-48



: S 14 (Rhone Poulenc)

	, N m
1	35 ± 5
2	35 ± 5
3	40 ± 5
4	45 ± 5
7	45 ± 5
5	45 ± 5
6	110 ± 5

# 8810

	-	(36H)	(10H)	(11H)
1	4	8810-36H-1-04SA	8810-10H-1-04PA	8810-11H-1-04PA
2	7	8810-36H-2-07SA	8810-10H-2-07PA	8810-11H-2-07PA
2	4	8810-36H-2-04S	8810-10H-2-04P	8810-11H-2-04P
2	1	8810-36H-2-01SA	8810-10H-2-01PA	8810-11H-2-01PA
3	12	8810-36H-3-12SA	8810-10H-3-12PA	8810-11H-3-12PA
4	19	8810-36H-4-19SA	8810-10H-4-19PA	8810-11H-4-19PA
4	12	8810-36H-4-12SA	8810-10H-4-12PA	8810-11H-4-12PA
4	4	8810-36H-4-04SA	8810-10H-4-04PA	8810-11H-4-04PA
7	38	8810-36H-7-38SA	8810-10H-7-38PA	8810-11H-7-38PA
5	37	8810-36H-5-37SA	8810-10H-5-37PA	8810-11H-5-37PA
5	1	8810-36H-5-01SA	8810-10H-5-01PA	8810-11H-5-01PA
6	68	8810-36H-6-68SA	8810-10H-6-68SA	8810-11H-6-68PA
6	4 + 2	8810-36H-6-04SA	8810-10H-6-04PA	8810-11H-6-04PA

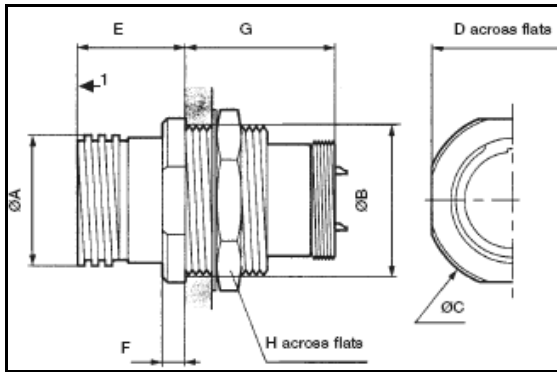
: - X, Y, Z -

	-	(12H)	(14H)	(15H)
1	4	8810-12H-1-04PA	8810-14H-1-04PA	8810-15H-1-04P
2	7	8810-12H-2-07PA	8810-14H-2-07PA	8810-15H-2-07P
2	4	8810-12H-2-04P	8810-14H-2-04PA	8810-15H-2-04P
2	1	8810-12H-2-01PA	8810-14H-2-01PA	8810-15H-2-01P
3	12	8810-12H-3-12PA	8810-14H-3-12PA	8810-15H-3-12P
4	19	8810-12H-4-19PA	8810-14H-4-19PA	8810-15H-4-19P
4	12	8810-12H-4-12P	8810-14H-4-12PA	8810-15H-4-12P
4	4	8810-12H-4-04PA	8810-14H-4-04PA	8810-15H-4-04P
7	38	8810-12H-7-38P	8810-14H-7-38P	8810-15H-7-38PA
5	37	8810-12H-5-37P	8810-14H-5-37PA	8810-15H-5-37P
5	1	8810-12H-5-01P	8810-14H-5-01PA	8810-15H-5-01P
6	68	8810-12H-6-68P	8810-14H-6-68PA	8810-15H-6-68P
6	4 + 2	8810-12H-6-04P	8810-14H-6-04PA	8810-15H-6-04P

		# 20	# 16	Ø
		Ø - 1.0 - 0.9 <sup>2</sup> - 7.5 A max	Ø - 1.57 - 1.34 <sup>2</sup> - 15A max.	
1	04			
2	07 04 01			1 Ø 7 100 A 16 <sup>2</sup>
3	12			
4	19 12 04			4 # 8 45 A 4 <sup>2</sup>
7	38			
5	37 01			1 Ø 18 400 A 185 <sup>2</sup>
6	68 04			4 Ø 10 150 A 70 <sup>2</sup> 2 # 8 45 A 45 <sup>2</sup>

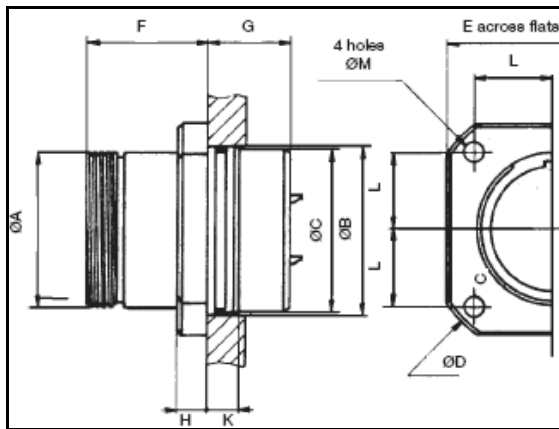
( 10H)

1-4



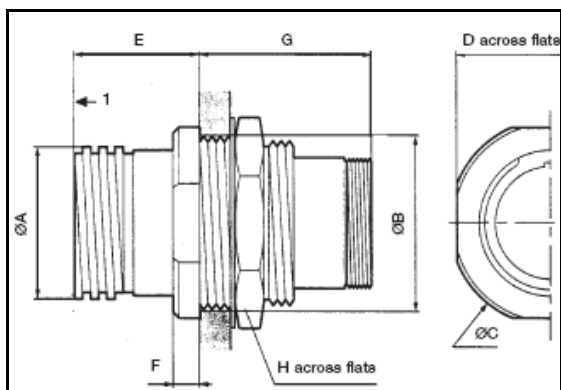
	1	2	3	4
A Max	22.10	25.10	30.10	34.60
B iso	23.5x1	26.5x1	32x1	36.5x1
C Max	35.00	38.50	44.50	49.50
D Max	32.10	35.10	41.60	46.10
E Max	24.00	24.00	25.00	26.00
F Max	5.00	5.00	5.00	5.00
G Max	34.50	34.50	34.50	34.50
H Max	27.00	30.00	36.00	41.00

7



	7
A Max	48.00
B (H8)	51.40
C	50.60
D Max	80.00
E Max	66.00
F Max	38.00
G Max	26.00
H Max	9.00
K Max	9.50
L	24.00
M	5.70

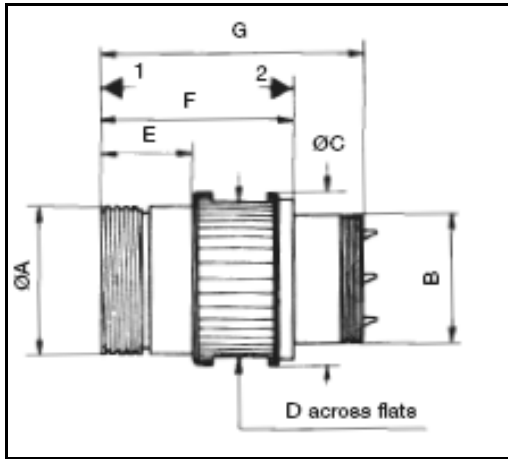
5-6



	5	6
A Max	72.00	93
B iso	70x2	89x2
C Max	94.00	125.00
D Max	85.00	111.00
E Max	60.80	60.80
F Max	14.50	14.50
G Max	74.00	74.00
H Max	80.00	104.00

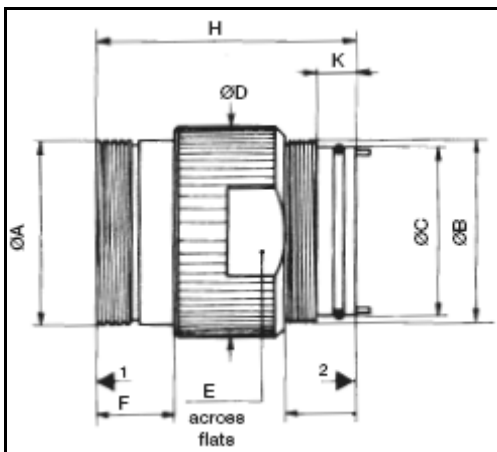
( 11H)

1-4



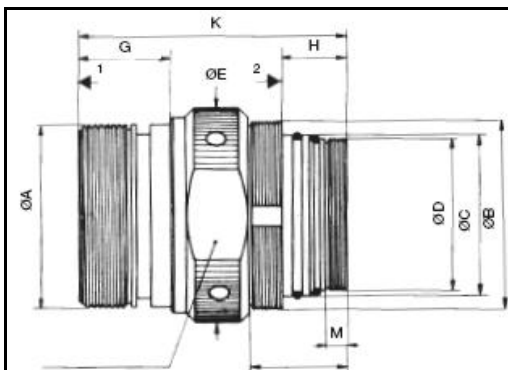
	1	2	3	4
A Max	22.10	25.10	30.10	34.60
B Max	16.8x0.5	20x0.75	25.5x0.75	30x0.75
C Max	26.50	30.00	35.00	40.00
D Max	24.10	27.10	32.10	36.10
E Max	19.00	19.00	20.00	21.00
F Max	42.10	42.10	43.10	44.10
G Max	58.10	58.10	59.10	60.10

7



	7
A Max	48.10
B Max	48x0.75
C Max	44.2f8
D Max	55.50
E Max	50.00
F Max	20.70
G Max	18.60
H Max	66.90
K Max	10.70

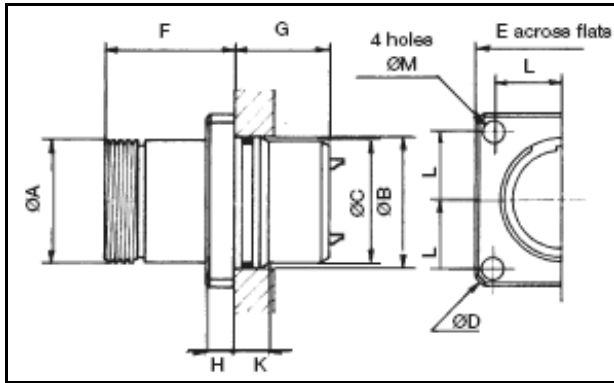
5-6



	5	6
A Max	72.00	93.00
B iso	74x1.5	96x2
C Max	2.28f7	3.25f8
D Max	58x1.5	77x1.5
E Max	89.10	110.10
F Max	80.00	101.00
G Max	46.30	46.30
H Max	32.50	32.50
K Max	135.20	135.20
L Max	50.50	50.50
M Max	10.60	10.60

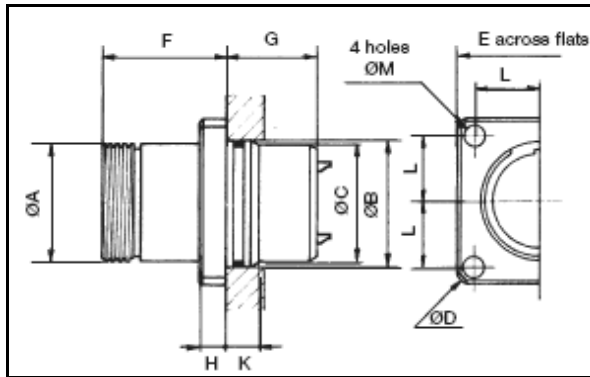
( 15H)

1-4



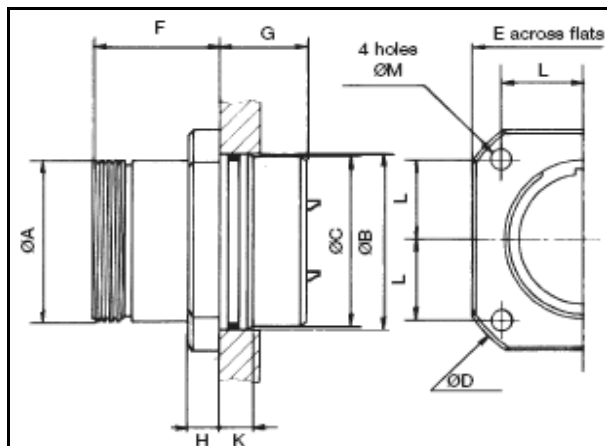
	1	2	3	4
A Max	22.10	25.10	30.10	34.60
B (H8)	23.60	26.60	32.10	36.60
C Max	22.90	25.90	31.30	35.80
D Max	49.50	53.50	59.60	64.60
E Max	36.00	39.00	45.00	49.00
F Max	34.10	34.10	36.10	37.10
G Max	24.20	24.20	23.20	23.20
H Max	8.00	8.00	8.00	8.00
K Max	9.50	9.50	9.50	9.50
L Max	13.50	15.00	17.00	19.00
M	4.70	4.70	5.70	5.70

7



	7
A Max	48.10
B (H8)	51.40
C	50.60
D Max	80.00
E Max	66.00
F Max	38.10
G Max	26.20
H Max	9.00
K Max	9.50
L	24.00
M	5.70

5-6

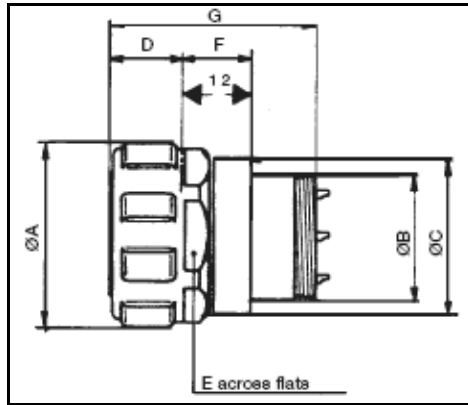


	5	6
A Max	72.00	93.00
B (H8)	70.10	89.10
C	69.20	88.20
D Max	110.00	138.00
E Max	86.10	105.10
F Max	71.00	73.10
G Max	63.40	61.40
H Max	15.00	15.00
K Max	19.00	19.00
L	33.00	40.00
M	8.70	10.70

# 8810

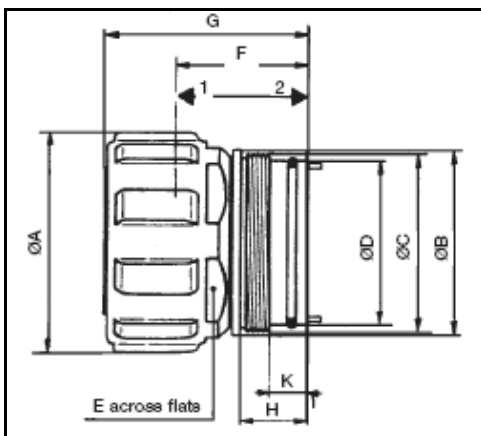
( 36H)

1-4



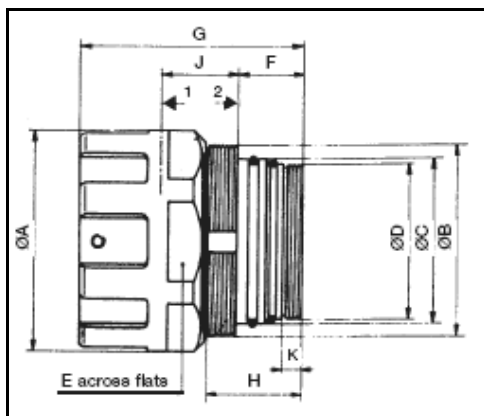
	1	2	3	4
A Max	30.00	33.50	39.00	43.50
B iso	16.8x0.5	20x0.75	25.5x0.75	30x0.75
C Max	24.20	27.70	33.20	37.70
E Max	26	29	34	38
D Max	17.30	17.30	18.30	19.30
F Max	16.80	16.80	15.80	14.80
G Max	50.10	50.10	50.10	50.10

7

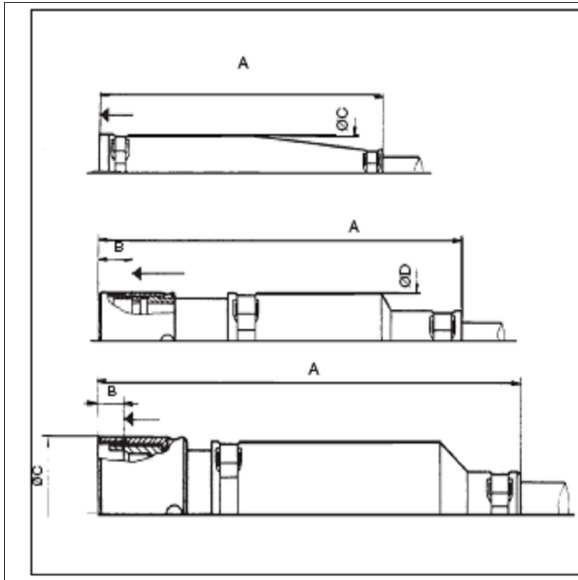


	7
A Max	60.50
B Max	50.00
C iso	48x0.75
D	44.2f8
E Max	51.50
F Max	36.30
H Max	18.60
G Max	56.00
K Max	10.70

5-6

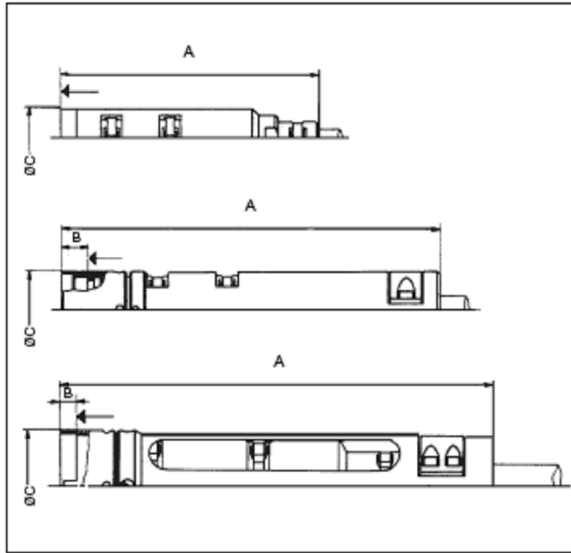


	5	6
A Max	87.30	110.30
B iso	74x1.5	96x2
C	62.5 f7	82.5 f8
D iso	58x1.5	77x1.5
E Max	80.00	100.00
F Max	32.50	32.50
J Max	37.50	37.50
G Max	112.50	112.50
K Max	10.60	10.60
H Max	48.50	48.50



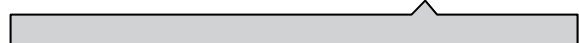
	1	2	3	4
A Max	105.00	119.00	135.00	149.00
C Max	26.00	29.40	35.70	40.70
<b>7</b>				
A Max				210.00
B Max				18.60
C Max				50.00
<b>5</b>				
A Max	230.00		280.00	
B Max	14.90		14.90	
C Max	79.00		99.00	

1	7.8-8.8	8810-13-078-088	7	18.0-20.0	8810-73-180-200
1	8.7-9.7	8810-13-087-097	7	20.0-22.0	8810-73-200-220
1	9.5-10.5	8810-13-095-105	7	22.0-24.0	8810-73-220-240
1	10.5-11.5	8810-13-105-115	7	24.0-26.0	8810-73-240-260
			7	26.0-28.0	8810-73-260-280
2	9.3-10.3	8810-23-093-103	5	15.0-20.0	8810-53-150-200
2	10.3-11.3	8810-23-103-113	5	20.0-25.0	8810-53-200-250
2	11.0-12.0	8810-23-110-120	5	25.0-30.0	8810-53-250-300
2	12.0-13.0	8810-23-120-130	5	30.0-35.0	8810-53-30-350
3	9.5-11.0	8810-33-095-110	6	22.0-28.0	8810-63-220-280
3	11.0-12.5	8810-33-110-125	6	28.0-34.0	8810-63-280-340
3	12.5-14.0	8810-33-125-140	6	34.0-40.0	8810-63-340-400
3	14.0-15.5	8810-33-140-155	6	40.0-45.0	8810-63-400-450
			6	45.0-50.0	8810-63-450-500
4	11.2-12.7	8810-43-112-127			
4	12.7-14.2	8810-43-127-142			
4	14.0-15.5	8810-43-140-155			
4	15.5-17.0	8810-43-155-170			



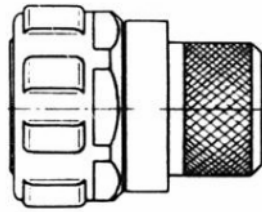
	1	2	3	4
A Max	146.00	153.00	160.00	167.00
C Max	24.70	28.20	33.70	38.20
		<b>7</b>		
A Max				2430
B Max				17.90
C Max				50.00
		5	6	
A Max			383.00	392.00
B Max			15.00	15.00
C Max			80.10	90.00

1	7.8-8.8	8810-13-	078-088	7	18.0-20.0	8810-73-	180-200
1	8.7-9.7	8810-13-	087-097	7	20.0-22.0	8810-73-	200-220
1	9.5-10.5	8810-13-	095-105	7	22.0-24.0	8810-73-	220-240
1	10.5-11.5	8810-13-	105-115	7	24.0-26.0	8810-73-	240-260
				7	26.0-28.0	8810-73-	260-280
2	9.3-10.3	8810-23-	093-103	5	15.0-20.0	8810-53-	150-200
2	10.3-11.3	8810-23-	103-113	5	20.0-25.0	8810-53-	200-250
2	11.0-12.0	8810-23-	110-120	5	25.0-30.0	8810-53-	250-300
2	12.0-13.0	8810-23-	120-130	5	30.0-35.0	8810-53-	30-350
3	9.5-11.0	8810-33-	095-110	6	22.0-28.0	8810-63-	220-280
3	11.0-12.5	8810-33-	110-125	6	28.0-34.0	8810-63-	280-340
3	12.5-14.0	8810-33-	125-140	6	34.0-40.0	8810-63-	340-400
3	14.0-15.5	8810-33-	140-155	6	40.0-45.0	8810-63-	400-450
				6	45.0-50.0	8810-63-	450-500
4	11.2-12.7	8810-43-	112-127	1 - 7			
4	12.7-14.2	8810-43-	127-142	>17 0.669, 8810 6524.			
4	14.0-15.5	8810-43-	140-155				
4	15.5-17.0	8810-43-	155-170				

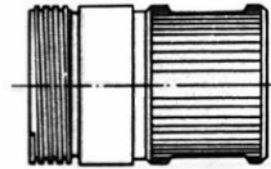


# 8810

SCR

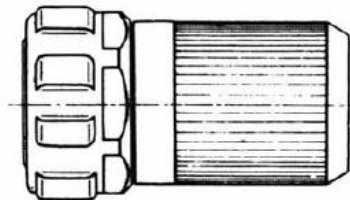


SCP



	1 - 04	2 - 04	2 - 07	3 - 12	4 - 12	4 - 19
<b>SCR</b>	8810-2861	8810-6459	8810-2862	8810-2863	8810-6213	8810-2864
<b>SCP</b>	8810-2878	8810-6460	8810-2879	8810-2880	8810-6212	8810-2881
<b>TCR</b>	8810-2844	8810-6834	8810-2845	8810-2846	8810-6836	8810-2847
<b>TCP</b>	8810-2902	8810-6835	8810-2903	8810-2904	8810-6837	8810-2905

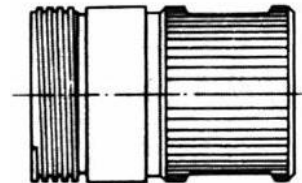
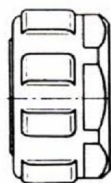
TCR



TCP



	7 - 38	5 - 37	6 - 68	2 - 01	4 - 04	5 - 01	6 - 04
<b>SCR</b>	8810-2752	8810-2480	8810-2866	8810-2867	8810-2868	8810-2869	8810-2870
<b>SCP</b>	8810-6230	8810-2882	8810-2883	8810-2884	8810-2885	8810-2886	8810-2887
<b>TCR</b>	8810-6838	8810-2848	8810-2849	8810-2850	8810-2851	8810-2852	8810-2853
<b>TCP</b>	8810-6839	8810-2906	8810-2908	8810-2909	8810-2910	8810-2911	8810-2912

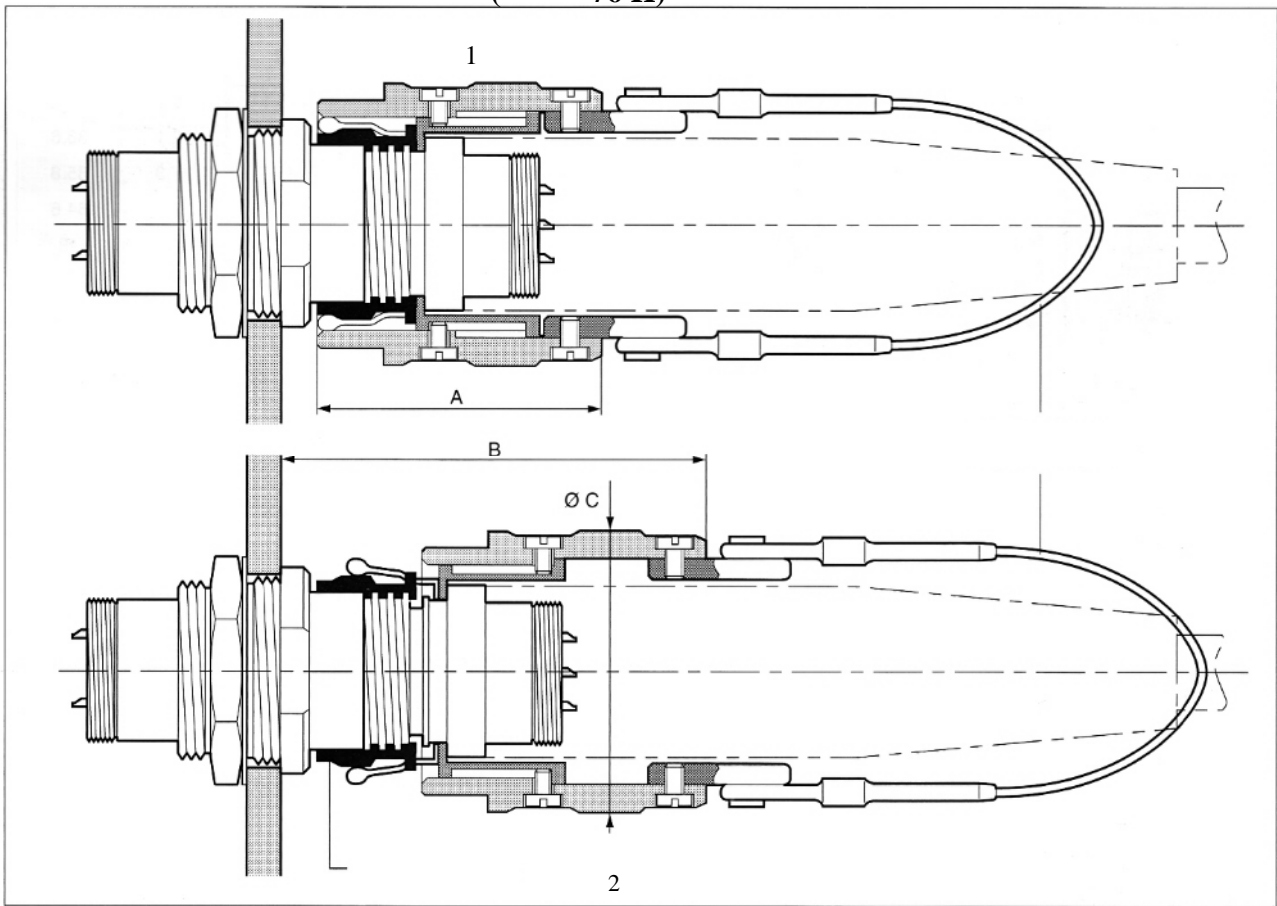


<b>1</b>	8810-1197	8810-2916
<b>2</b>	8810-1198	8810-2888
<b>3</b>	8810-1199	8810-2889
<b>4</b>	8810-1200	8810-2890
<b>7</b>	8810-2205	8810-3214
<b>5</b>	8810-1201	8810-2891
<b>6</b>	8810-1202	8810-2892

# 8810.



( 76 H)



	A	B	Ø C Max
<b>1</b>	64.4	91	45.6
<b>2</b>	64.4	91	50.6
<b>3</b>	64.4	92	57.6
<b>4</b>	64.4	93	61.6
<b>7</b>	71.8	123	78.6
<b>5</b>	117.4	184	105.6
<b>6</b>	117.4	184	126.6

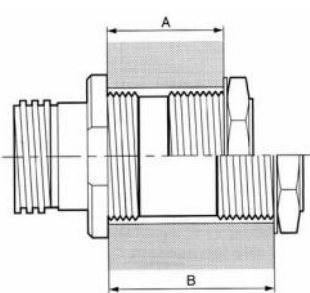
# 8810.

( )	( )						
	1	2	3	4	7	5	6
1	57.5	88	106	120	170	200	200
20					393		
30				245	350	509	
40			160	325	500	786	
60	77	117	159	240	485	700	1178
80			212	320	645	900	1571

: . 8810

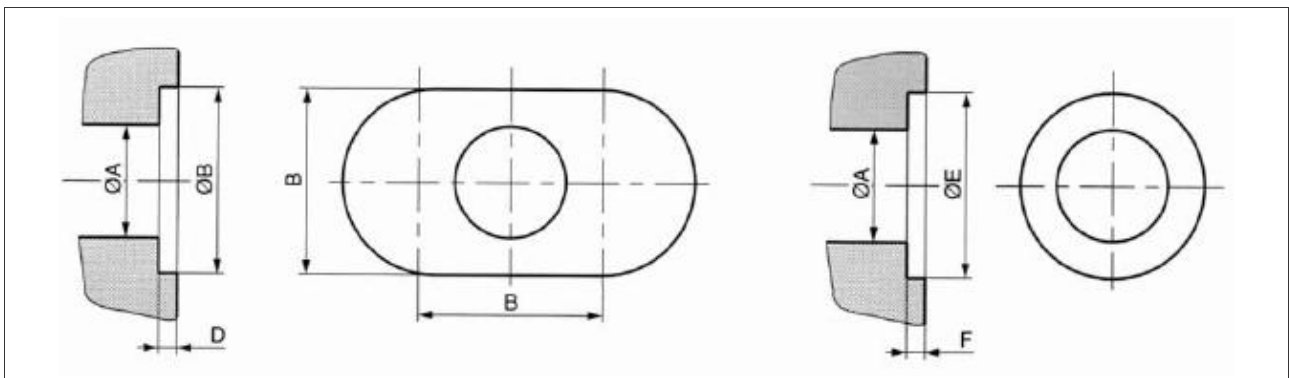
1	4	8810-76H-1-04SA	8810-1062
2	7	8810-76H-2-07SA	8810-1063
2	4	8810-76H-2-04S	
2	1	8810-76H-2-01SA	
3	12	8810-76H-3-12SA	8810-1064
4	19	8810-76H-4-19SA	8810-1065
4	12	8810-76H-4-12SA	
4	4	8810-76H-4-04SA	
7	38	8810-76H-7-38SA	8810-3718
5	37	8810-76H-5-37SA	8810-1649
5	1	8810-76H-5-01SA	
6	68	8810-76H-6-68SA	8810-2596
6	4 + 2	8810-76H-6-04SA	

	min.	max. 10H	max. 14H
<b>1</b>	2,5	8	26
<b>2</b>	2,5	8	26
<b>3</b>	2,5	8	26
<b>4</b>	2,5	8	26
<b>7</b>	3	22	-
<b>5</b>	4	25	60
<b>6</b>	4	25	60

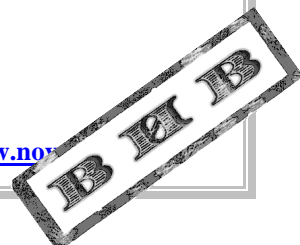
				
<b>1</b>	8 - 40	8810-2922	40 - 60	8810-2926
<b>2</b>	8 - 40	8810-2923	40 - 60	8810-2927
<b>3</b>	8 - 40	8810-2924	40 - 60	8810-2928
<b>4</b>	8 - 40	8810-2925	40 - 60	8810-2929
<b>5</b>	25 - 80	8810-2956	80 - 100	8810-2958
<b>6</b>	25 - 80	8810-2957	80 - 100	8810-2959

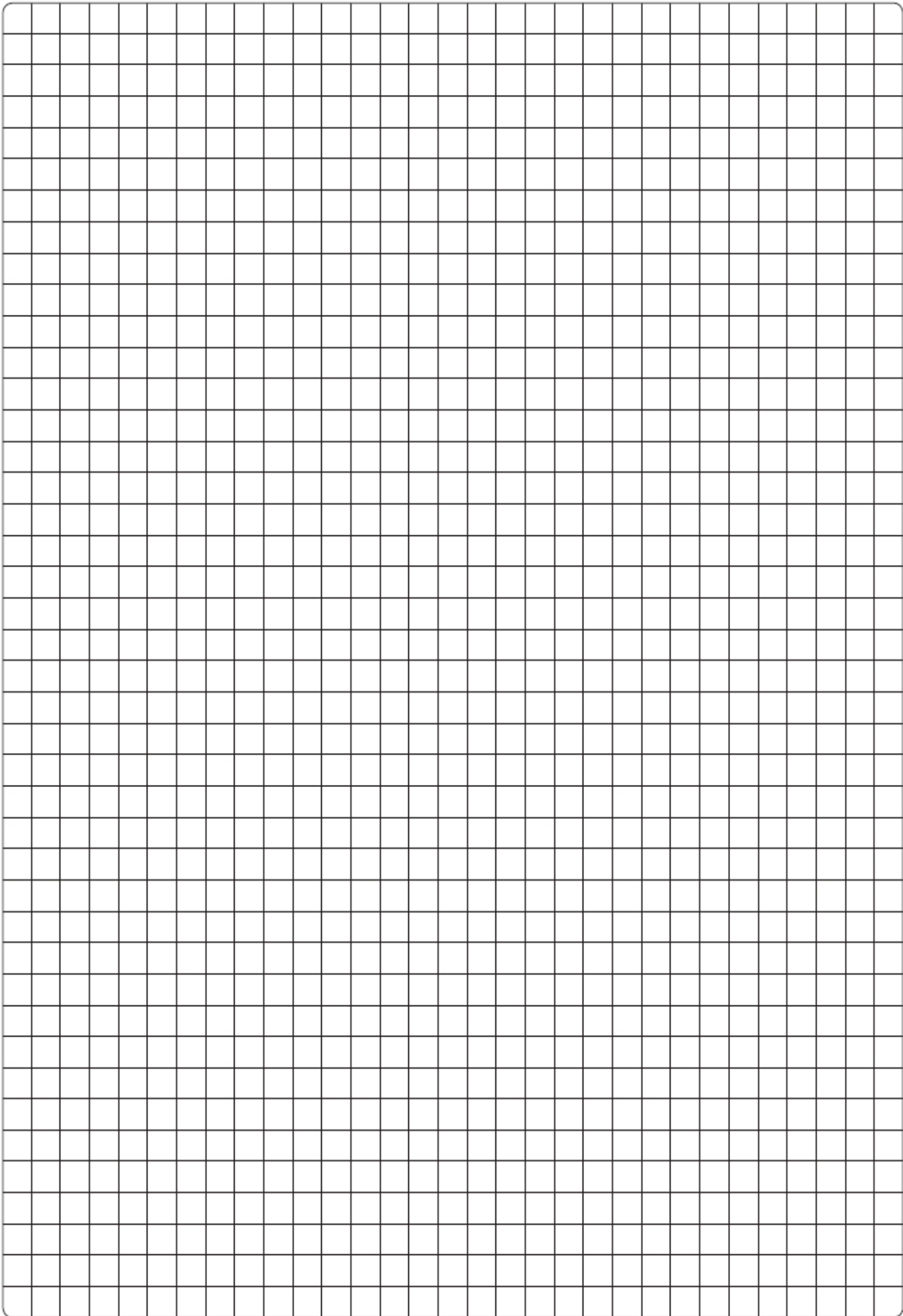
, 15H

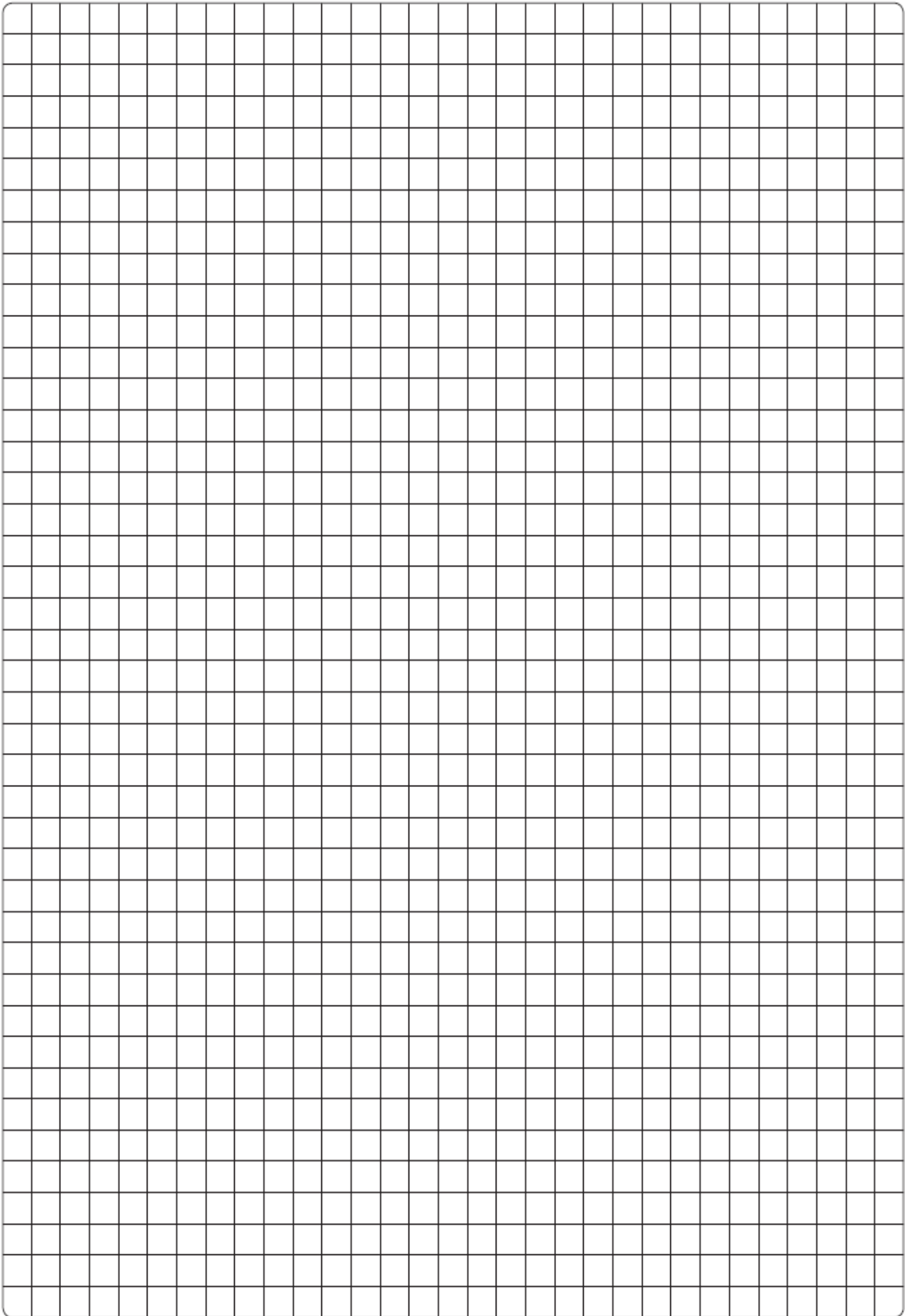
	Ø A	Ø B	C	Ø D	E max	Ø F
<b>1</b>	23,6	25	13,5	23,1	10	M4
<b>2</b>	26,6	28,1	15	26,1	10	M4
<b>3</b>	32,1	33,4	17	31,5	10	M5
<b>4</b>	36,6	38,1	19	36	10	M5
<b>7</b>	51,4	53,1	24	50,8	10	M5
<b>5</b>	70,1	71,9	33	69,4	20	M8
<b>6</b>	89,1	91,4	40	88,4	20	M10



	Ø A	B	D	Ø E max	F	, 10H	
						min.	max.
<b>1</b>	23,6	32,5	4,5	36	1	2,5	8
<b>2</b>	26,6	35,5	4,5	39,5	1	2,5	8
<b>3</b>	32,1	42	4,5	44,5	1	2,5	8
<b>4</b>	36,6	46,5	4,5	51	1	2,5	8
<b>7</b>	51,4	63,5	8,5	70	2	3	22
<b>5</b>	70,1	86	11	95,5	3	4	25
<b>6</b>	89,1	112	11	127	3	4	25











<http://www.novaspb.com>

./ : +7-812-458-75-90,

+7-812-325-42-90

+7-812-325-42-90

[sales@novaspb.com](mailto:sales@novaspb.com)

[info@novaspb.com](mailto:info@novaspb.com)